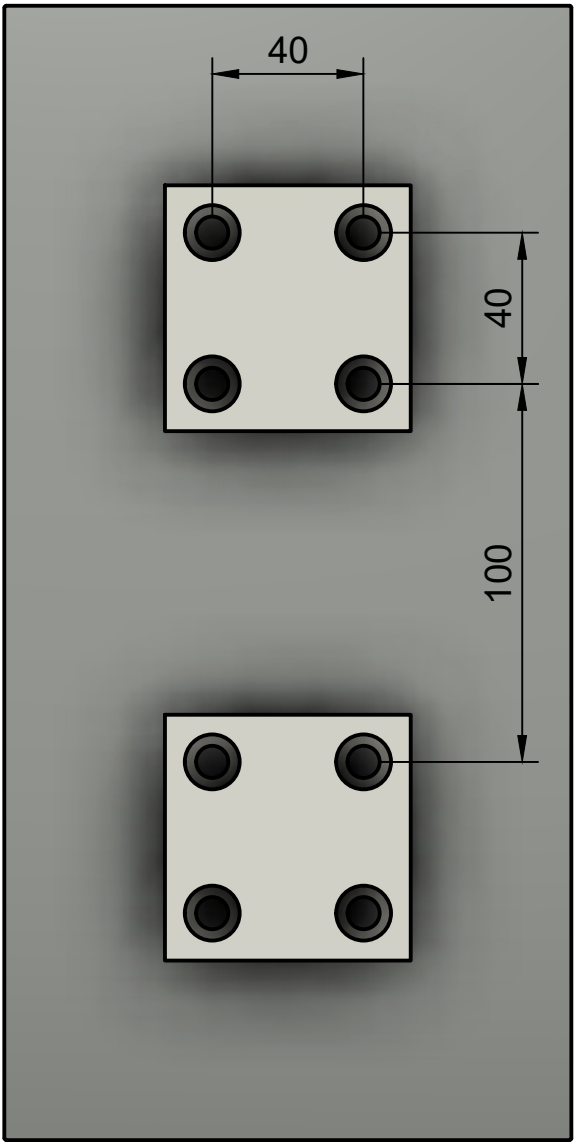
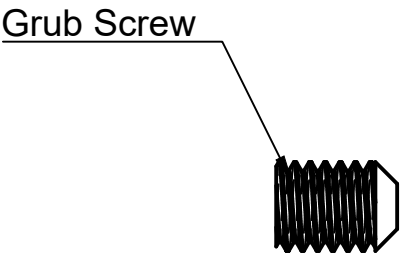


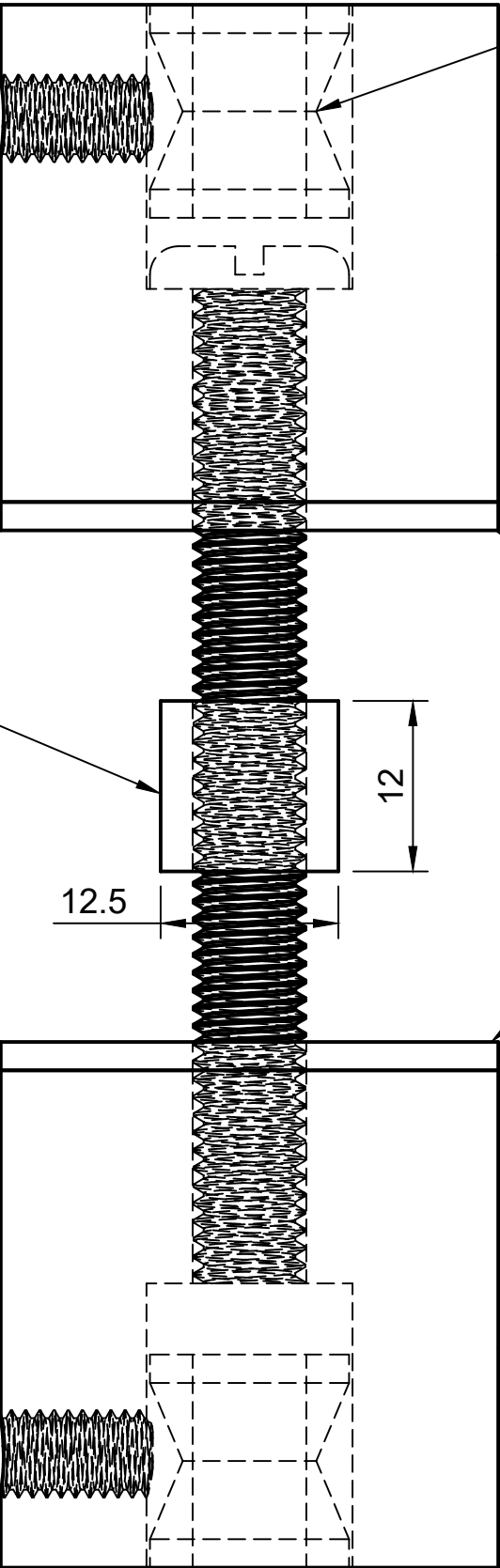
M04 Entrance Handle Dimensions		
Product Code	Size	THRU FIXING HOLE SIZE
EHSFM04.10.150.300	150 x 300	8



Drawing  
M04.10.150.300  
Date  
20/09/2023  
Scale  
1:2



Grub Screw



Brass Ferrule

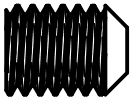
Handle Stand

Plastic/Rubber Washer  
(only for glass fixing)

Plastic/Rubber Washer  
(only for glass fixing)

Threaded Handle Stand

Plastic/Rubber Washer  
(only for glass fixing)



**Glass Fixing Installation Instructions**

Drill 13mm holes for bolt and plastic/rubber washer

Check dimensions carefully prior to drilling holes, each handle in our range is different.

Cut bolt to required length. Allow 30mm longer than the door thickness.

Screws stands together through door, including the plastic/rubber washers as shown in the drawing.

Place handle on stand, inserting the Ferrules into the stand.

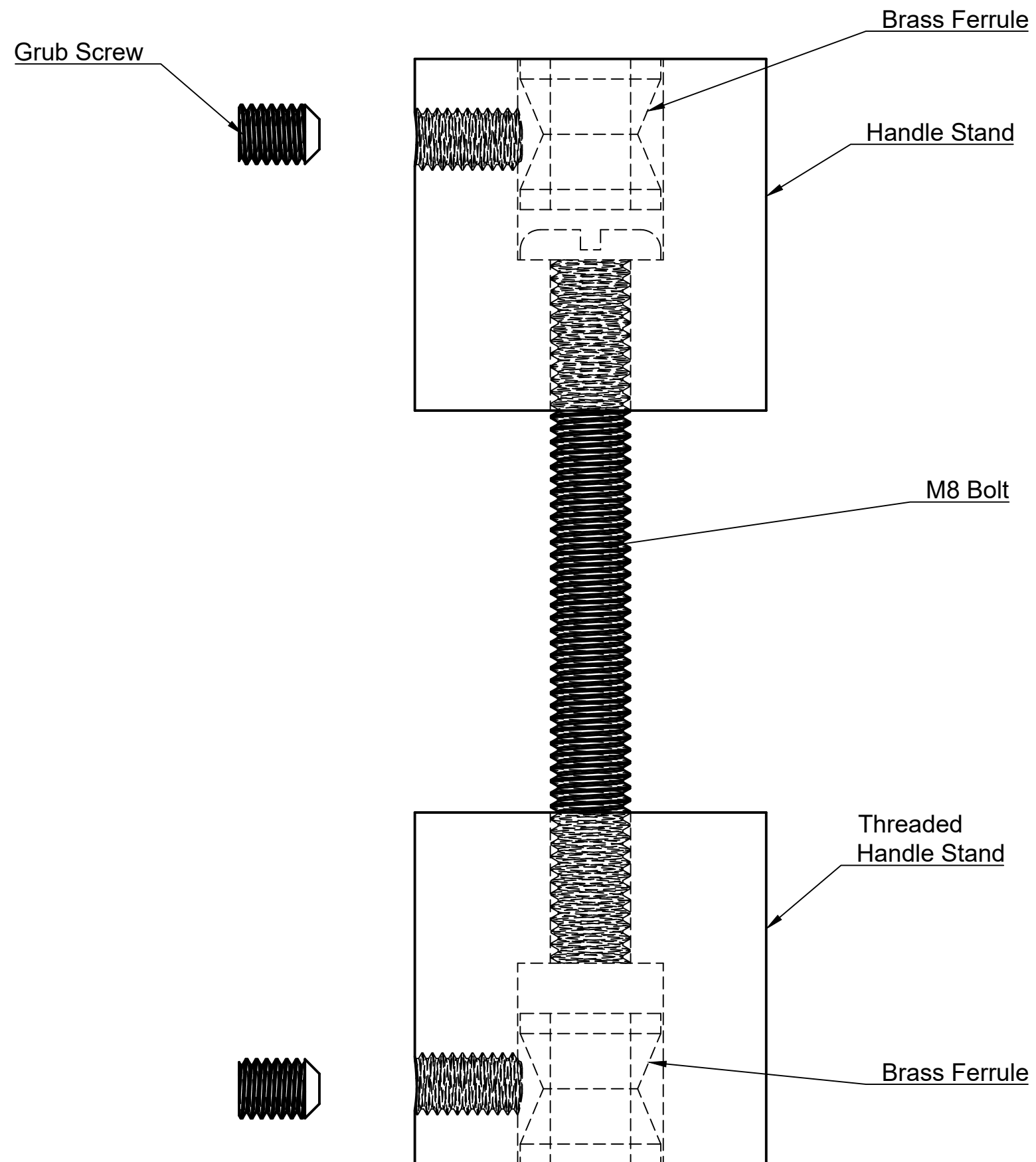
Tighten Grub Screws.

Glass Fixing Kits with Rubber/Plastic parts are sold seperately

Rear Fixing Studs are availble when only one side requires a handle.

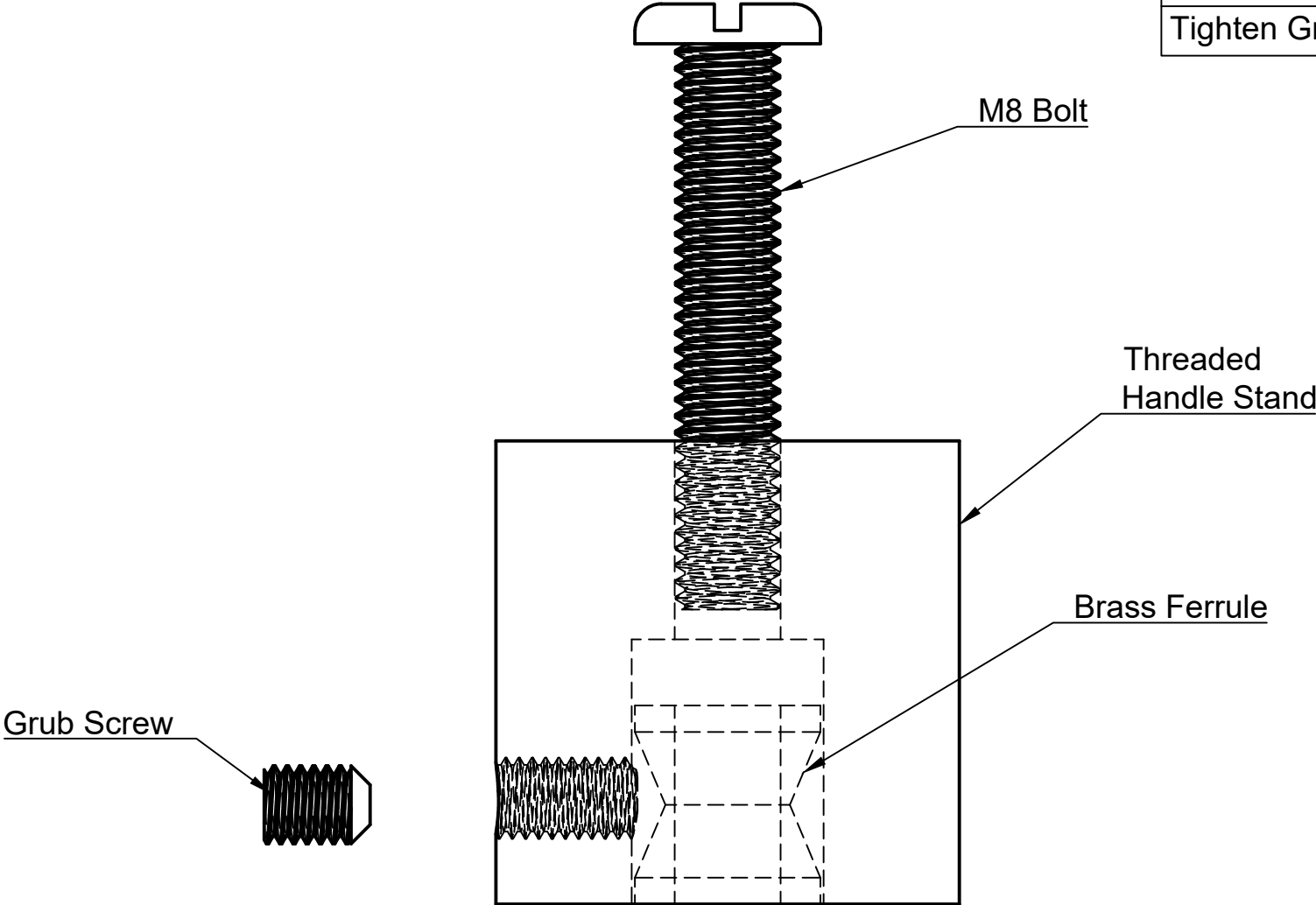


Drawing	Entrance Handle Glass Fixing B2B
Date	30/08/2024
Scale	2:1

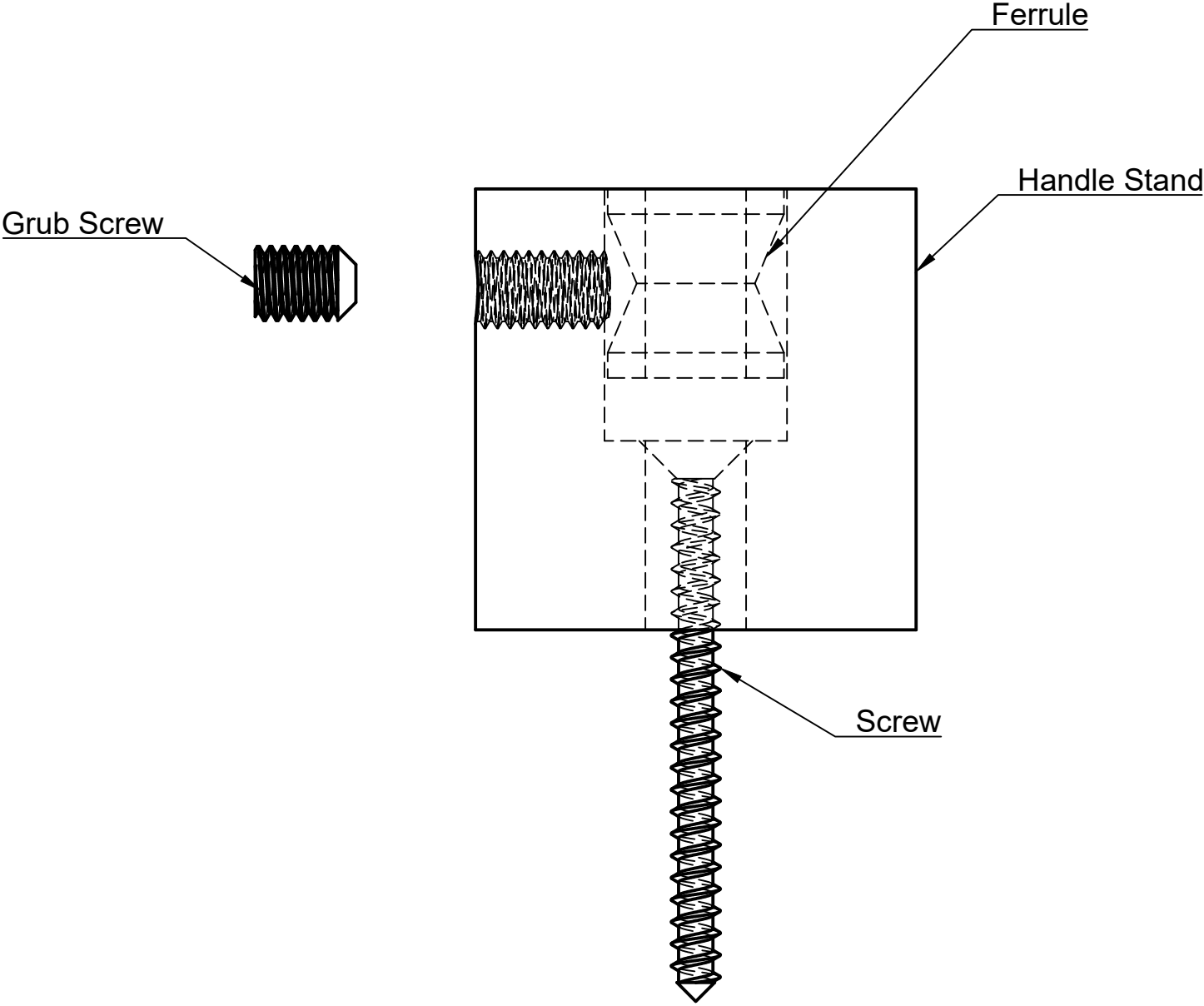


Installation Instructions
IMPORTANT! Mark and drill door from both sides.
Cut bolt to required length. Allow 30mm longer than door thickness.
Screw stands together through door.
Place handle on stand, inserting Ferrules into stand.
Tighten Grub Screws

Installation Instructions
IMPORTANT! Mark and drill door from both sides.
Cut bolt to required length. Allow 15mm longer than door thickness.
Screw stands from behind to door.
Place handle on stand, inserting Ferrules into stand.
Tighten Grub Screws



Installation Instructions
Screw stand to door.
Place handle on stand, inserting Ferrules into stand.
Tighten Grub Screws



StyleFinishDoorware

Drawing
Entrance Handle Surface Fixing
Date
2/02/2023
Scale
2:1