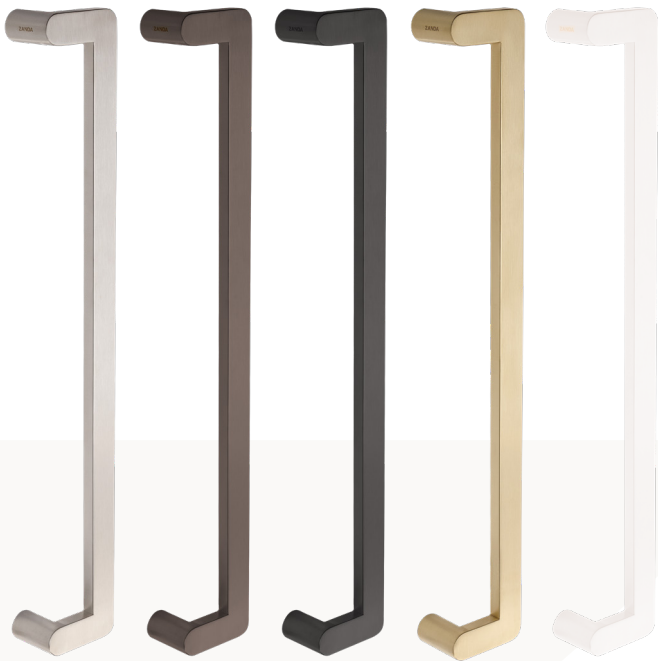


“MORE THAN JUST QUALITY — AN EXPERIENCE”

316 STAINLESS STEEL

DUKE OFFSET

ENTRANCE PULL HANDLES



Product Code	O/A Length	Centres	Projection	Offset
7117	630mm	600mm	55mm	90mm

Description:

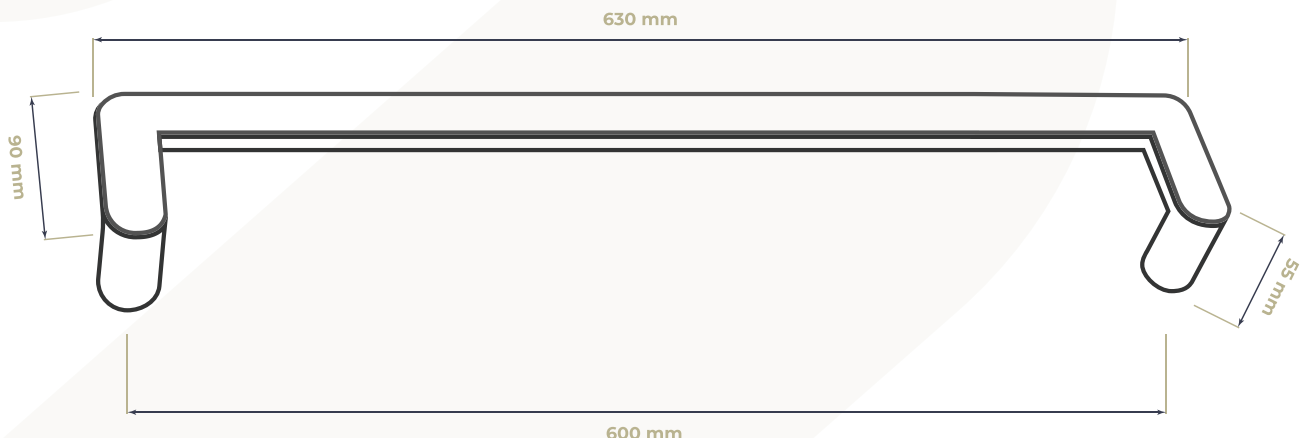
- **Backed by a 20-year warranty**, reflecting Zanda's commitment to quality and longevity
- **Available in a standard length of 630mm** — to suit a variety of door sizes and design preferences
- **Features a 90mm offset** for **enhanced clearance** and ease of use for accessible environments
- **Complies with AS.1428 disability code**, making it suitable for **accessible and inclusive environments**
- **316 Stainless Steel ensures durability** and **corrosion resistance**, especially in **coastal** or **high-humidity areas**
- **Suitable for residential and commercial use** — from luxury homes to boutique shops.

Fixing Options:

- **Face Fix** (For Timber / For Glass)
- **Rear Fix** (For Timber / Aluminium)
- **Back-to-Back Fix** (For Timber / Aluminium)

Available Finishes:

- **Stainless Steel (SS)**
- **Graphite Nickel (GN)**
- **Matt Black (BLK)**
- **Satin Brass (SB)**
- **White (WHT)**



1 300 926 321

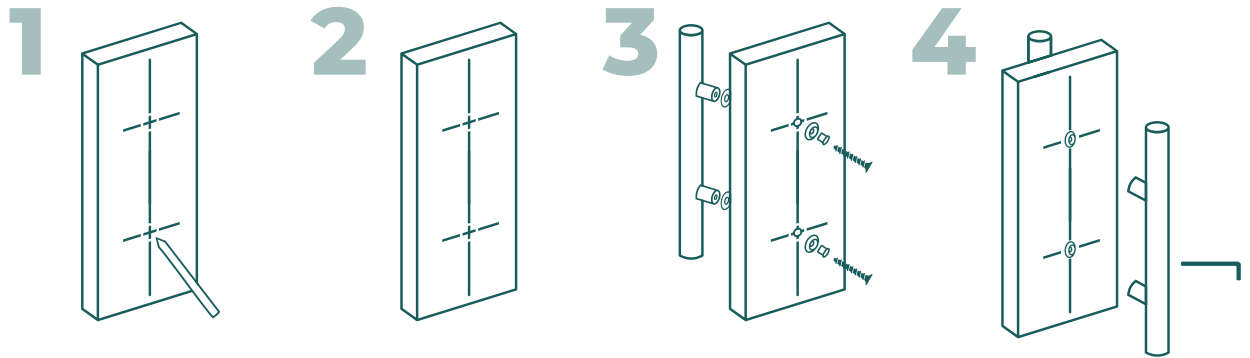
sales@zanda.com.au

www.zanda.com.au

Note: Measurements are in millimeters (mm)

"MORE THAN JUST QUALITY — AN EXPERIENCE"

BACK TO BACK FIXING



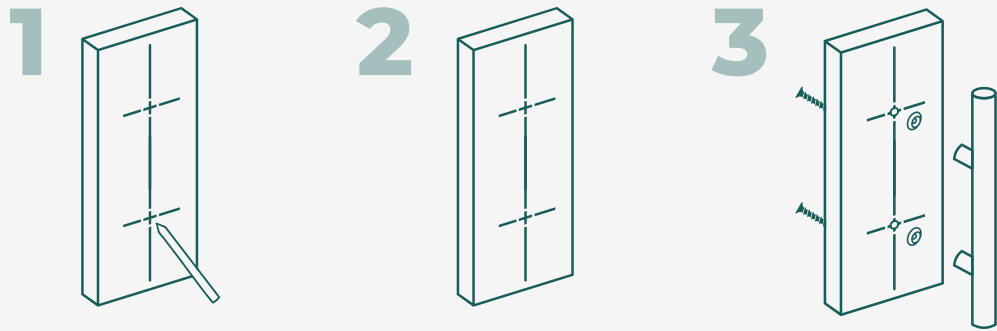
1 Mark fixing position on door. Ensure adequate space is provided for clearance of knuckles on door jamb.

2 Drill holes for through bolts.
(For glass doors, allow for neoprene sleeves)

3 Mount outside handle by bolting through door. Include the mounting base for inside handle.
(Only use neoprene sleeves and washers for glass doors)

4 Fix inside handle over cylindrical mount and fasten with Allen screws

SINGLE HANDLE REAR FIXING

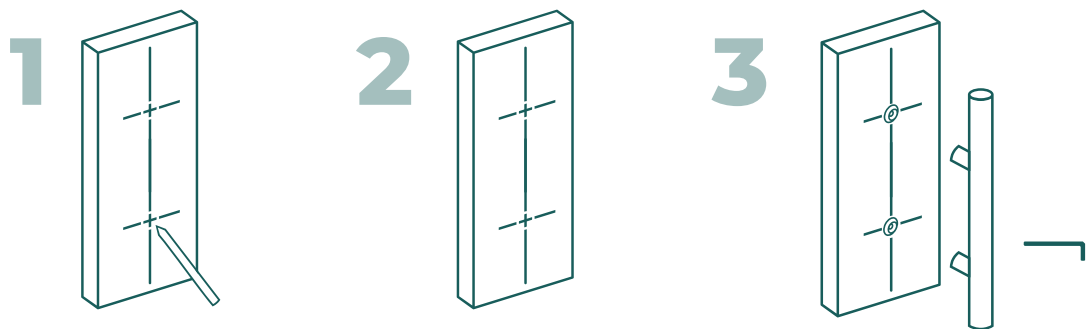


1 Mark fixing position on door. Ensure adequate space is provided for clearance of knuckles on door jamb.

2 Drill holes for through bolts.

3 Mount outside handle by bolting through door.

SINGLE HANDLE FACE FIXING



1 Mark fixing position on door. Ensure adequate space is provided for clearance of knuckles on door jamb.

2 Screw mounting bases to face of door using large screws supplied.

3 Fix handle over cylindrical mount and fasten with Allen screws.

NOTE: Face fixing is not recommended on Cedar or other soft timber doors.

“MORE THAN JUST QUALITY – AN EXPERIENCE”



CARE & MAINTENANCE FOR EVERY FINISH

Our products are built to last, and with simple care routines, you can maintain their original brilliance for years. From the timeless appeal of solid brass to the durability of stainless steel and aluminium, each material comes with tailored maintenance tips to help you protect your investment. We even offer guidance for coastal environments and high-use areas.



SCAN THE QR FOR FULL CARE INSTRUCTIONS AND FINISH DETAILS.

Keep your Zanda products looking their best.